



Summit Water Distribution Company

UTAH22059

8506 Blue Bird Lane

Park City, Utah 84098

Water Conservation Plan

2020

Table of Contents

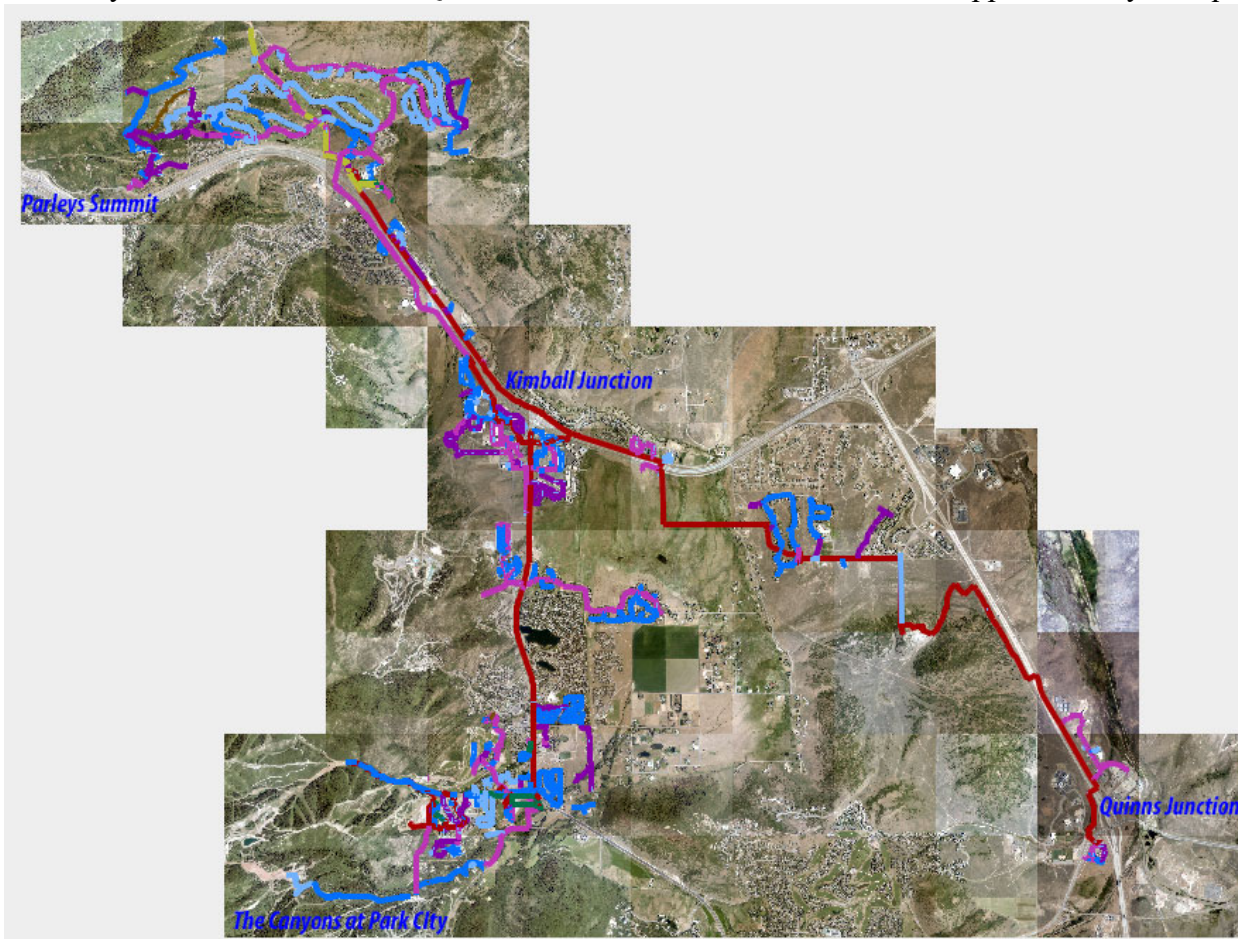
	Pg.
1. Introduction	3
2. System Profile	3
3. Existing Resources	4
4. Water Measurement	5
5. Billing	6
6. Water Use	7
7. Conservation Practices	9
8. Approval	11

Introduction

A safe, secure, uninterrupted source of water for our shareholders has always been the highest priority of Summit Water Distribution Company (SWDC). Despite the existence of long range planning for future source water via agreements with Weber Basin Water Conservancy District, our focus includes a concern for wise use of this precious resource. Management practices are pointed towards a respectful use of water, protection of water sources, and elimination of wasteful habits. Providing leadership in the education of SWDC staff, our shareholders, and the community in general is our guiding principle.

System Profile

Summit Water is located in the Snyderville Basin of Summit County, near Park City, Utah. Our service area includes developments scattered throughout the Snyderville Basin from Parleys Summit, to The Canyons at Park City Mountain Resort, and Quinns Junction. The total area served is approximately 16 square miles.



SWDC customers are shareholders in a non-profit, mutual water company. The company's water rights, sources, and distribution facilities are owned by the shareholders. As such, SWDC is not a retailer of water, but

an entity responsible to its owner/shareholders to deliver to them the water they own. As there is not a source for non-potable water our customers use, culinary water provides for both inside and outdoor use.

Our shareholder base is comprised of 2993 Residential connections, 1567 Commercial ERC's (Equivalent Residential Connection), 1094 Industrial ERC's, and 379 Institutional ERC's. No agricultural uses are presently connected to our system. Industrial use primarily consists of water used for Park City Mountain Resort snowmaking. Commercial uses are clustered primarily at Kimball Junction, Park City Mountain Resort, and US 40 and are comprised of retail outlets, services, lodging, and resort facilities.

Existing Resources

Water for our shareholders is produced from ten wells, a spring, and purchased from Weber Basin. These sources are backed by high priority water rights that consist of a combination of decreed rights, Weber Basin Water Conservancy District Rights and Davis and Weber Counties Canal Company rights.

Sources, Water Rights, & Rated Production Capacity

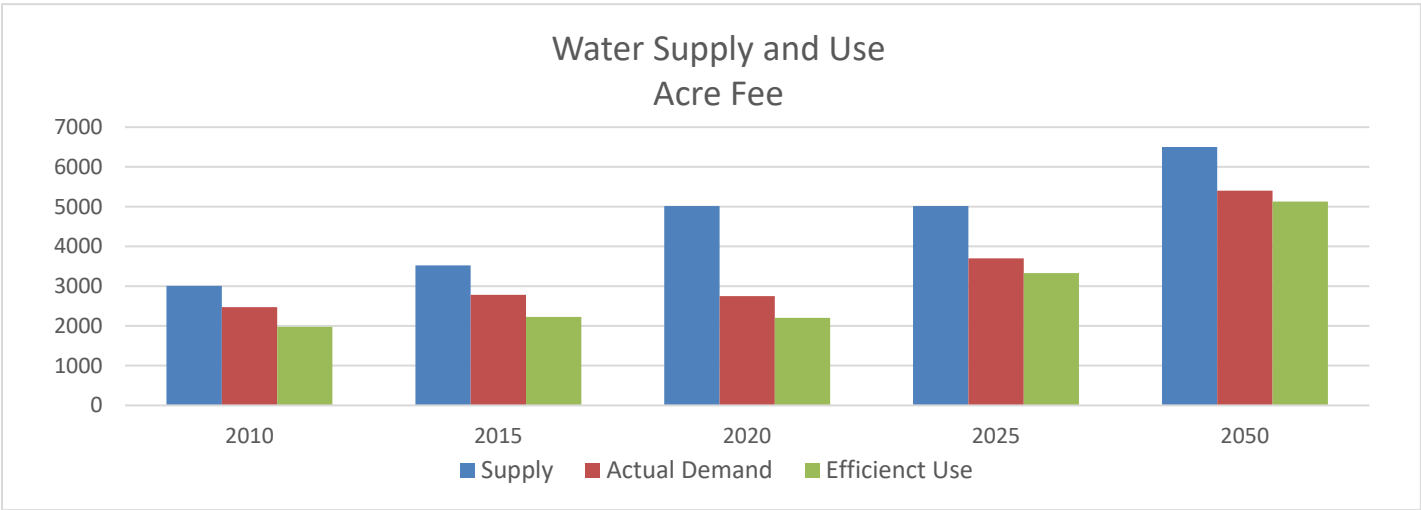
Source	Allocated	Type	Water Right	GPM	AC FT		
Spring Creek	Spring	35-8413 (a41702) , 35-5749 (a41698) , 35-6695 (E1255) , 35-9906 (a41698) ,	35-12892 (a41698) , 35-5806 (a41698) , 35-8417 (a41698) , 35-9909 (a41698) ,	35-13011, 35-13080 (a41700), 35-5822 (a41698) , 35-9030 (a13520) , 35-5748 (a41698)	35-6200 (E574) , 35-9738 (a41698) ,	242	1067.29
Hi Ute	Well	35-5748 (a41698) , 35-6986 (E1610) , 35-8455 (a41701) , 35-11528 (a41701) ,	35-5749 (a41698) , 35-8409 (a41701) , 35-9738 (a41698) , 35-11696 (a18524) ,	35-5806 (a41698) , 35-8417 (a41698) , 35-9906 (a41698) , 35-12892 (a41698)	35-5822 (a41698) , 35-8450 (a18448) , 35-9909 (a41698) ,	133	261.20
Jeremy	Well	35-5748 (a41698) , 35-8409 (a41701) , 35-9738 (a41698) , 35-11696 (a18524) ,	35-5749 (a41698) , 35-8417 (a41698) , 35-9906 (a41698) , 35-12892 (a41698)	35-5806 (a41698) , 35-8450 (a18448) , 35-9909 (a41698) ,	35-5822 (a41698) , 35-8455 (a41701) , 35-11528 (a41701) ,	511	280.00
Rest Stop	Well	35-5748 (a41698) , 35-6986 (E1610) , 35-7790 (E2062) , 35-8417 (a41698) , 35-8471 (a41703) , 35-9738 (a41698) , 35-11696 (a18524) ,	35-5749 (a41698) , 35-7787 (E2059) , 35-7791 (E2063) , 35-8450 (a18448) , 35-8484 (a10998) , 35-9906 (a41698) , 35-12892 (a41698)	35-5806 (a41698) , 35-7788 (E2060) , 35-8409 (a41701) , 35-8455 (a41701) , 35-8485 (a41703) , 35-9909 (a41698) ,	35-5822 (a41698) , 35-7789 (E2061) , 35-8413 (a41702) , 35-8460 (a10868) , 35-8488 (a41703) , 35-11528 (a41701) ,	800	727.95
Church	Well	35-5748 (a41698) , 35-6986 (E1610) , 35-8455 (a41701) , 35-11528 (a41701) ,	35-5749 (a41698) , 35-8409 (a41701) , 35-9738 (a41698) , 35-11696 (a18524) ,	35-5806 (a41698) , 35-8417 (a41698) , 35-9906 (a41698) , 35-12892 (a41698)	35-5822 (a41698) , 35-8450 (a18448) , 35-9909 (a41698) ,	95	239.00
Storage	Well	35-8413 (a41702) , 35-5822 (a41698) , 35-8450 (a18448) , 35-9909 (a41698) ,	35-5748 (a41698) , 35-6986 (E1610) , 35-8455 (a41701) , 35-11528 (a41701) ,	35-5749 (a41698) , 35-8409 (a41701) , 35-9738 (a41698) , 35-11696 (a18524) ,	35-5806 (a41698) , 35-8417 (a41698) , 35-9906 (a41698) , 35-12892 (a41698)	800	442.90
U224	Well	35-5748 (a41698) , 35-8409 (a41701) , 35-9738 (a41698) , 35-11696 (a18524) ,	35-5749 (a41698) , 35-8417 (a41698) , 35-9906 (a41698) , 35-12892 (a41698)	35-5806 (a41698) , 35-8450 (a18448) , 35-9909 (a41698) ,	35-5822 (a41698) , 35-8455 (a41701) , 35-11528 (a41701) ,	167	152.27
F7 & New F7	Well	35-5748 (a41698) , 35-6709 (E1270) , 35-8417 (a41698) , 35-9909 (a41698) ,	35-5749 (a41698) , 35-6710 , 35-8455 (a41701) , 35-11528 (a41701) ,	35-5806 (a41698) , 35-6720 , 35-9738 (a41698) , 35-12892 (a41698)	35-5822 (a41698) , 35-8409 (a41701) , 35-9906 (a41698) ,	653	668.95
White Pine	Well	35-5748 (a41698) , 35-8409 (a41701) , 35-9906 (a41698) ,	35-5749 (a41698) , 35-8417 (a41698) , 35-9909 (a41698) ,	35-5806 (a41698) , 35-8455 (a41701) , 35-11528 (a41701) ,	35-5822 (a41698) , 35-9738 (a41698) , 35-12892 (a41698)	20	27.81
Weber Basin	Purchased					1426	1150.00
Totals						4847	5017.37

SWDC experiences two periods of high use. We experience the highest use during the summer months due to irrigation and tourism. We also experience a high use in the winter months due to snowmaking and ski industry tourism. Our wells typically draw down when in use during the summer months, slowly recharge in the fall, remain relatively stable during the winter season, and quickly recharge in the spring. The addition of purchase water has allowed our sources to rest more than in past years and we are seeing a dramatic improvement in our recharge levels.

The company has eleven storage tanks totaling 6 million gallons. These tanks typically draw down from 10 pm to 7am during the irrigation season and fill throughout the day. Main lines are comprised primarily of ductile iron, PVC, and HDPE.

Reliable Supply

Summit Water has an agreement with Weber Basin Water Conservancy District to provide for our future water demands. This water is available to us in perpetuity.



Water Measurement

Metering

Summit Water recently completed a system wide upgrade to a cell-based meter reading system. This system reads meters once a day and delivers usage data in 15-minute increments. This technology has the able to notify our staff and customers in the event of a detected leak, excessive consumption, incorrect irrigation timeframe, and many other parameters. Our customers also have access to their hourly, daily, monthly and annual use. It has helped tremendously to determine the cause of many of our customer leaks and over watering. We also have a dedicated staff member who closely monitors leak alerts and contacts the customer to help resolve the issue quickly. Customer meters are read monthly for billing, source meters are read daily during the week, and booster station meters are read weekly. We are also in the process of testing older high use meters. Once we

understand the accuracy of our meters, we will implement a meter replacement program. Un-metered water uses include home construction water, and water used for flushing main water lines and hydrants.

Water Loss

SWDC lost approximately 187 million gallons due to leaks and under-registering meters in 2019. This constitutes approximately 20% of our annual production. Our goal is to reduce water loss by 50%. Not only will this help conserve water it will also reduce the need and the associated costs of purchasing water from Weber Basin

Summit Water has focused on reducing water loss as one of the main sources of conservation. To accomplish our goal, we are employing several strategies which include:

- Analyzing zone production compared to zone use to identify high loss areas. Possibly installing master meters on high loss subdivisions to determine if the loss is due to leaks or under registering meters.
- Testing older high use meters for accuracy and establishing a replacement protocol.
- Utilizing leak detection equipment to systematically locate underground leaks on all system infrastructure.
- Repairing known leaks in a timely manner.

Billing

As a shareholder owned company, whose shareholders are entitled to an annual allotment of water, it is difficult to implement a tiered price structure for their use. Our customers pay a base assessment, regardless of the amount of water used, and a pump surcharge fee for actual use. This pump surcharge was implemented to encourage conservation. It is a cost savings for customers who do not use their full allotment. If a shareholder exceeds their allotment, they enter a punitive rate structure. The following chart shows the rate structure for each of our 3 pressure zones based on the percentage of shares they own.

Zone 1	Base Assessment			Pump Surcharge	Overuse Rates		
	Shares	Monthly	Annual	Pump Surcharge	Overuse Rates per 1,000 Gallons		
Base Assessment plus Pump	1.00	\$101.00	\$1,212.00	+ \$.64/1000 gallons	0-50,000	50-150,000	150,000 +
Surcharge @ \$.64 per 1,000 gallons	0.76	\$76.76	\$921.12	+ \$.64/1000 gallons	Excess	Excess	Excess
	0.50	\$50.50	\$606.00	+ \$.64/1000 gallons	\$5.20	\$7.48	\$9.76
	0.45	\$45.45	\$545.40	+ \$.64/1000 gallons			

Zone 2	Base Assessment			Pump Surcharge	Overuse Rates		
	Shares	Monthly	Annual	Pump Surcharge	Overuse Rates per 1,000 Gallons		
Base Assessment plus Pump	1.00	\$101.00	\$1,212.00	+ \$1.09/1000 gallons	0-50,000	50-150,000	150,000 +
Surcharge @ \$1.09 per 1,000 gallons	0.76	\$76.76	\$921.12	+ \$1.09/1000 gallons	Excess	Excess	Excess
	0.50	\$50.50	\$606.00	+ \$1.09/1000 gallons	\$5.65	\$7.94	\$10.22
	0.45	\$45.45	\$545.40	+ \$1.09/1000 gallons			

Zone 3	Base Assessment			Pump Surcharge	Overuse Rates		
	Shares	Monthly	Annual	Pump Surcharge	Overuse Rates per 1,000 Gallons		
Base Assessment plus Pump	1.00	\$101.00	\$1,212.00	+ \$1.98/1000 gallons	0-50,000	50-150,000	150,000 +
Surcharge @ \$1.98 per 1,000 gallons	0.76	\$76.76	\$921.12	+ \$1.98/1000 gallons	Excess	Excess	Excess
	0.50	\$50.50	\$606.00	+ \$1.98/1000 gallons	\$6.55	\$8.83	\$11.11
	0.45	\$45.45	\$545.40	+ \$1.98/1000 gallons			

Water Use

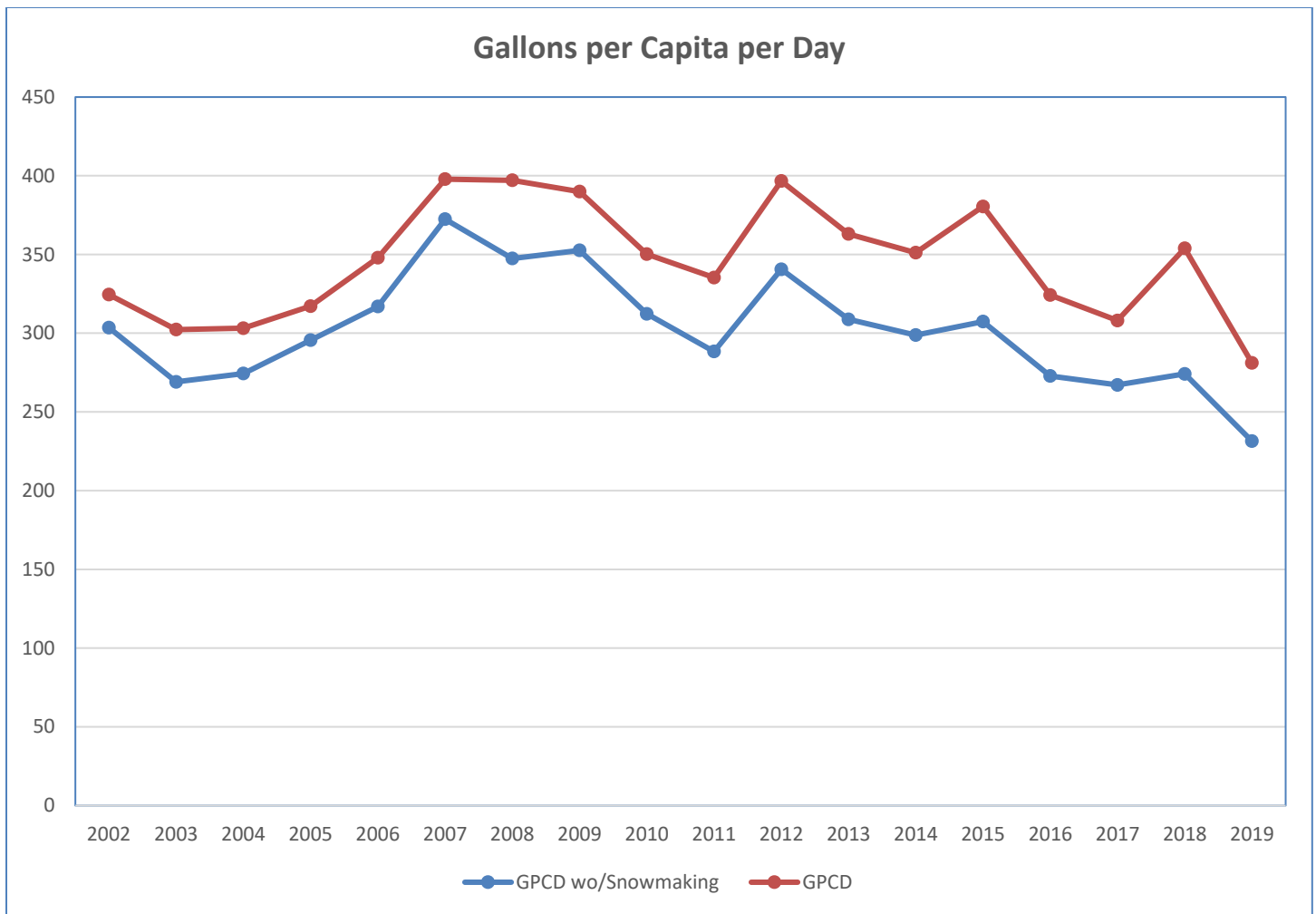
The following table shows the amount of water delivered in gallons from 2015 - 2019 to residential, commercial, industrial and institutional shareholders. Note: 2015-2018 usage varies from what was submitted to the DWR due to a recent audit that reclassified some of our customers to better reflect their type of use. Specifically, snowmaking was moved from commercial to industrial and some condominium projects were moved from commercial to residential.

	Residential	Commercial	Industrial	Institutional	Total
2015	408,121,047	293,360,190	174,027,312	30,161,555	905,670,104
2016	324,981,399	201,953,711	123,027,688	6,766,122	756,435,647
2017	383,811,568	203,264,884	105,023,975	53,530,804	745,631,231
2018	407,795,307	198,001,524	212,452,548	44,569,900	862,819,279
2019	345,663,092	181,971,765	126,355,773	43,725,541	697,716,171

In 2019 Summit Water customers consume approximately 281 Gallons per Capita per Day (GPCD) for all purposes including snowmaking. Both Institutional and Industrial use includes water used for snowmaking. As it is difficult to promote conservation regarding water used to create snow for the ski industry, we believe this use misrepresents our actual customer use and the yearly fluctuation may taint our conservation progress data. Therefore we have included data with and without snowmaking use, The following charts display our current GPCD and our significant progress towards our goal since 2002.

Gallons per Capita per Day

	WO/ Snowmaking			W/Snowmaking		
	Indoor (Winter Use)	Potable (Outdoor)	Total	Indoor (Winter Use)	Potable (Outdoor)	Total
Residential	63	76	139	63	76	139
Commercial	63	10	73	63	10	73
Institutional	4	9	13	4	14	18
Industrial	0	1	1	0	51	51
All Users	130	96	226	130	151	281



Conservation Practices

Prudent and responsible use of water by our shareholders has always been promoted by SWDC. We are contractually obligated to deliver to our shareholders the increment of water that they own. This has not deterred us, however, from actively encouraging our shareholders to be conservation minded. We have assigned a Water Conservation Specialist to oversee our conservation efforts. We are encouraged by the success of our effort thus far. We are confident that we can achieve our goal of reducing our GPCD to 200 for our non-snowmaking users by 2030.

The following are steps we have and are taking to reduce our use and loss.

- Reduce water loss by 50%. Which will reduce overall water production by 10%. We will accomplish this by replacing faulty meters, locating and repairing underground leaks, and reducing our facilities process water use.
- Utilize meter technology to catch and stop leaks within our customer’s homes and irrigation systems quickly.
- Time of day watering restrictions and a recommended twice a week watering schedule.
- Public Awareness Information is provided to our shareholders in several ways.
 - Our Facebook and Twitter pages are regularly updated with the current weekly watering guide as

well as indoor and outdoor conservation tips.

- Our website summitwater.us includes a page dedicated to conservation tips and our irrigation schedule.
 - Personal contact from our staff when a leak within a customer's home or irrigation is detected.
 - Those who come to us to connect a new home to the system are instructed about their water share and the cost of exceeding it. They are encouraged at that time to be mindful about how much grass they plant and to use water wise landscaping in their overall plan.
 - When property is sold, new shareholders receive a packet of information that explains their water share, the charges associated with it, and conservation methods to assist their efforts
 - One-on-one discussions between SWDC staff and shareholders and between shareholders themselves have proved to be an effective catalyst to water conservation.
 - Shareholders are updated monthly on each bill about the status of their water use in the current water year and often tips promoting conservation.
- Deposit. The water company holds a deposit on new construction until the sprinkling system is installed. This encourages contact between the water company and the shareholder at a critical time when we can have some input about conservation and water use.
 - Restricted Use. During periods of high temperatures and peak demand, the water company has developed a contingency plan that calls for restricted use of water by shareholders.
 - Conferences and other training opportunities. SWDC has a staff member currently certified in Water Conservation and is an active member of the Rural Water Association of Utah. We have participated in every annual conference and many of the summer conferences. We attend many of their training classes. We also attend many Division of Drinking Water training sessions. All of these assist us in being well prepared to assist our shareholders.

SWDC's Conservation Specialist:

- Mike Folkman – mike.folkman@swdc.us

WATER CONSERVATION PLAN REVIEW AND APPROVAL

Review and Approval. The plan was officially approved and adopted by the Board of Directors at its regular meeting held .

Signed

A handwritten signature in black ink, appearing to read 'Brody Saunders', written over a horizontal line.

Brody Saunders, President

12/15/20

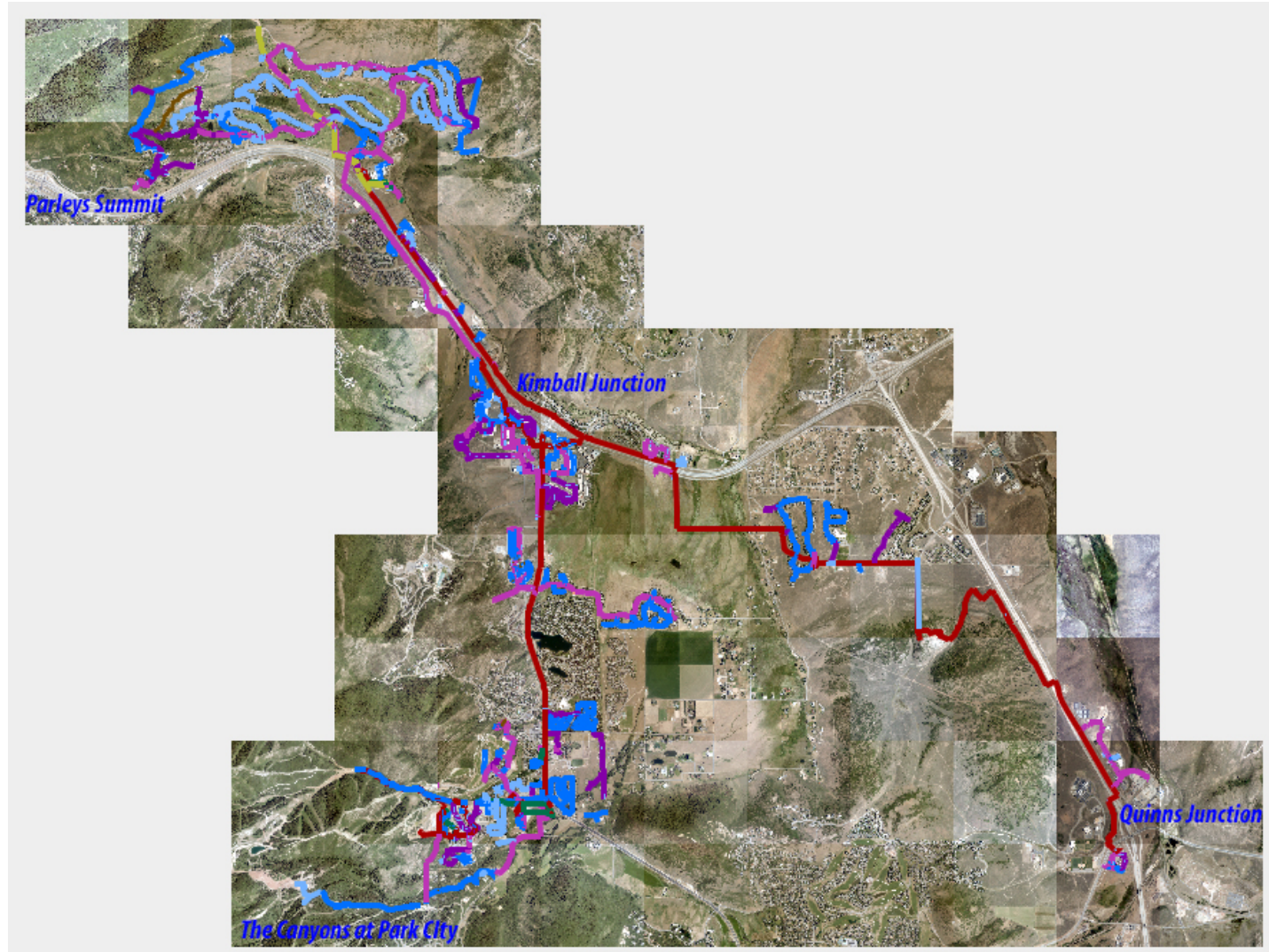
Date



2020 Conservation Plan

SWDC

Service area includes developments scattered throughout the Snyderville Basin from Parleys Summit, to The Canyons at Park City Mountain Resort, and Quinns Junction.



Water for our shareholders is produced from ten wells, a spring, and purchased from Weber Basin. These sources are backed by high priority water rights that consist of a combination of decreed rights, Weber Basin Water Conservancy District Rights and Davis and Weber Counties Canal Company rights.

Presently we have the ability to supply 4847 gpm and 5017 acre feet annually.

Sources, Water Rights, & Rated Production Capacity

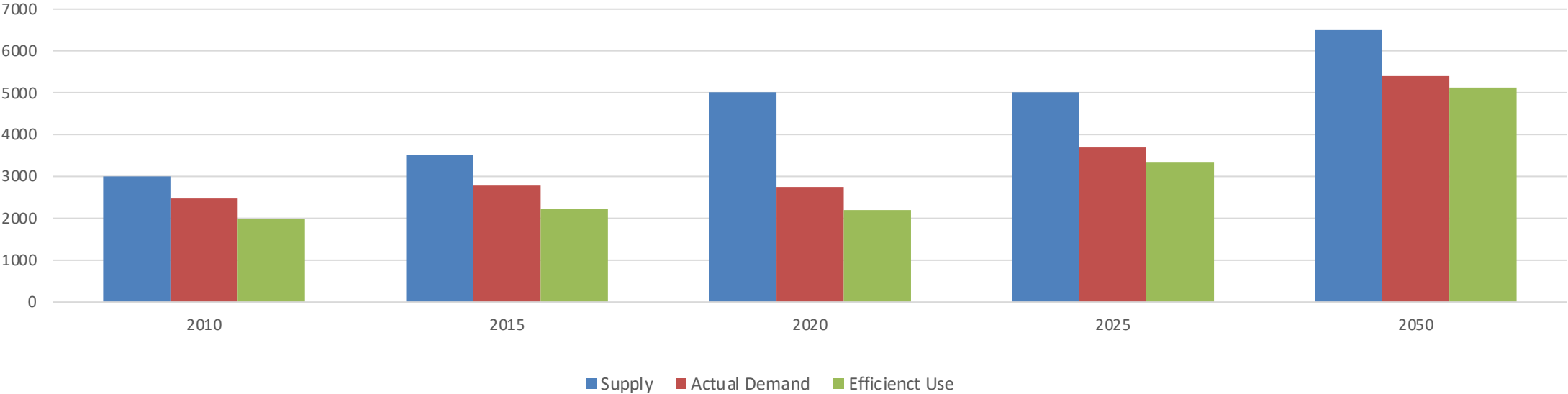
Source Allocated	Type	Water Right				GPM	AC FT
Spring Creek	Spring	35-8413 (a41702) , 35-5749 (a41698) , 35-6695 (E1255) , 35-9906 (a41698) ,	35-12892 (a41698) , 35-5806 (a41698) , 35-8417 (a41698) , 35-9909 (a41698) ,	35-13011, 35-13080 (a41700), 35-5822 (a41698) , 35-9030 (a13520) , 35-5748 (a41698) ,	35-6200 (E574) , 35-9738 (a41698) ,	242	1067.29
Hi Ute	Well	35-5748 (a41698) , 35-6986 (E1610) , 35-8455 (a41701) , 35-11528 (a41701) ,	35-5749 (a41698) , 35-8409 (a41701) , 35-9738 (a41698) , 35-11696 (a18524) ,	35-5806 (a41698) , 35-8417 (a41698) , 35-9906 (a41698) , 35-12892 (a41698) ,	35-5822 (a41698) , 35-8450 (a18448) , 35-9909 (a41698) ,	133	261.20
Jeremy	Well	35-5748 (a41698) , 35-8409 (a41701) , 35-9738 (a41698) , 35-11696 (a18524) ,	35-5749 (a41698) , 35-8417 (a41698) , 35-9906 (a41698) , 35-12892 (a41698) ,	35-5806 (a41698) , 35-8450 (a18448) , 35-9909 (a41698) ,	35-5822 (a41698) , 35-8455 (a41701) , 35-11528 (a41701) ,	511	280.00
Rest Stop	Well	35-5748 (a41698) , 35-6986 (E1610) , 35-7790 (E2062) , 35-8417 (a41698) , 35-8471 (a41703) , 35-9738 (a41698) , 35-11696 (a18524) ,	35-5749 (a41698) , 35-7787 (E2059) , 35-7791 (E2063) , 35-8450 (a18448) , 35-8484 (a10998) , 35-9906 (a41698) , 35-12892 (a41698) ,	35-5806 (a41698) , 35-7788 (E2060) , 35-8409 (a41701) , 35-8455 (a41701) , 35-8485 (a41703) , 35-9909 (a41698) ,	35-5822 (a41698) , 35-7789 (E2061) , 35-8413 (a41702) , 35-8460 (a10868) , 35-8488 (a41703) , 35-11528 (a41701) ,	800	727.95
Church	Well	35-5748 (a41698) , 35-6986 (E1610) , 35-8455 (a41701) , 35-11528 (a41701) ,	35-5749 (a41698) , 35-8409 (a41701) , 35-9738 (a41698) , 35-11696 (a18524) ,	35-5806 (a41698) , 35-8417 (a41698) , 35-9906 (a41698) , 35-12892 (a41698) ,	35-5822 (a41698) , 35-8450 (a18448) , 35-9909 (a41698) ,	95	239.00
Storage	Well	35-8413 (a41702) , 35-5822 (a41698) , 35-8450 (a18448) , 35-9909 (a41698) ,	35-5748 (a41698) , 35-6986 (E1610) , 35-8455 (a41701) , 35-11528 (a41701) ,	35-5749 (a41698) , 35-8409 (a41701) , 35-8455 (a41698) , 35-11696 (a18524) ,	35-5806 (a41698) , 35-8417 (a41698) , 35-9906 (a41698) , 35-12892 (a41698) ,	800	442.90
U224	Well	35-5748 (a41698) , 35-8409 (a41701) , 35-9738 (a41698) , 35-11696 (a18524) ,	35-5749 (a41698) , 35-8417 (a41698) , 35-9906 (a41698) , 35-12892 (a41698) ,	35-5806 (a41698) , 35-8450 (a18448) , 35-9909 (a41698) ,	35-5822 (a41698) , 35-8455 (a41701) , 35-11528 (a41701) ,	167	152.27
F7 & New F7	Well	35-5748 (a41698) , 35-6709 (E1270) , 35-8417 (a41698) , 35-9909 (a41698) ,	35-5749 (a41698) , 35-6710 , 35-8455 (a41701) , 35-11528 (a41701) ,	35-5806 (a41698) , 35-6720 , 35-9738 (a41698) , 35-12892 (a41698) ,	35-5822 (a41698) , 35-8409 (a41701) , 35-9906 (a41698) ,	653	668.95
White Pine	Well	35-5748 (a41698) , 35-8409 (a41701) , 35-9906 (a41698) ,	35-5749 (a41698) , 35-8417 (a41698) , 35-9909 (a41698) ,	35-5806 (a41698) , 35-8455 (a41701) , 35-11528 (a41701) ,	35-5822 (a41698) , 35-9738 (a41698) , 35-12892 (a41698) ,	20	27.81
Weber Basin	Purchased					1426	1150.00
Totals						4847	5017.37

Metering

Summit Water recently completed a system wide upgrade to a cell-based meter reading system. This system reads meters once a day and delivers usage data in 15-minute increments. This technology has the ability to notify our staff and customers in the event of a detected leak, excessive consumption, incorrect irrigation timeframe, and many other parameters. Our customers also have the access to their hourly, daily, monthly and annual water use. It has helped tremendously to determine the cause of many of our customer leaks and over watering. We also have a dedicated staff member who closely monitors leak alerts and contacts the customer to help resolve the issue quickly.



Water Supply and Use
Acre Fee



Reliable Supply

Summit Water has an agreement with Weber Basin Water conservancy District to supply for our future water demand.
Note: This chart represent the actual demand from our customers not the amount we are contractually obligated to provide.

Water Loss

SWDC lost approximately 187 million gallons due to leaks and under-registering meters in 2019. This constitutes approximately 20% of our annual production. Our goal is to reduce water loss by 50%. Not only will this help conserve water it will also reduce the need and the associated costs of purchasing water from Weber Basin

Summit Water has focused on reducing water loss as one of the main sources of conservation. To accomplish our goal, we are employing several strategies which include:

- Analyzing zone production compared to zone use to identify high loss areas. Possibly installing master meters on high loss subdivisions to determine if the loss is due to leaks or under registering meters.
- Testing older high use meters for accuracy and establishing a replacement protocol.
- Utilizing leak detection equipment to systematically locate underground leaks on all system infrastructure.
- Repairing known leaks in a timely manner.

Zone 1

Base Assessment plus Pump
Surcharge @ \$.64 per 1,000 gallons

Base Assessment			Pump Surcharge
Shares	Monthly	Annual	Pump Surcharge
1.00	\$101.00	\$1,212.00	+ \$.64/1000 gallons
0.76	\$76.76	\$921.12	+ \$.64/1000 gallons
0.50	\$50.50	\$606.00	+ \$.64/1000 gallons
0.45	\$45.45	\$545.40	+ \$.64/1000 gallons

Overuse Rates		
Overuse Rates per 1,000 Gallons		
0-50,000	50-150,000	150,000 +
Excess	Excess	Excess
\$5.20	\$7.48	\$9.76

Zone 2

Base Assessment plus Pump
Surcharge @ \$1.09 per 1,000 gallons

Base Assessment			Pump Surcharge
Shares	Monthly	Annual	Pump Surcharge
1.00	\$101.00	\$1,212.00	+ \$1.09/1000 gallons
0.76	\$76.76	\$921.12	+ \$1.09/1000 gallons
0.50	\$50.50	\$606.00	+ \$1.09/1000 gallons
0.45	\$45.45	\$545.40	+ \$1.09/1000 gallons

Overuse Rates		
Overuse Rates per 1,000 Gallons		
0-50,000	50-150,000	150,000 +
Excess	Excess	Excess
\$5.65	\$7.94	\$10.22

Zone 3

Base Assessment plus Pump
Surcharge @ \$1.98 per 1,000 gallons

Base Assessment			Pump Surcharge
Shares	Monthly	Annual	Pump Surcharge
1.00	\$101.00	\$1,212.00	+ \$1.98/1000 gallons
0.76	\$76.76	\$921.12	+ \$1.98/1000 gallons
0.50	\$50.50	\$606.00	+ \$1.98/1000 gallons
0.45	\$45.45	\$545.40	+ \$1.98/1000 gallons

Overuse Rates		
Overuse Rates per 1,000 Gallons		
0-50,000	50-150,000	150,000 +
Excess	Excess	Excess
\$6.55	\$8.83	\$11.11

Billing

SWDC customers pay a base assessment, regardless of the amount of water used, and a pump surcharge fee for actual use. This pump surcharge was implemented to encourage conservation. It is a cost savings for customers who do not use their full allotment. If a shareholder exceeds their allotment they enter a punitive rate structure.

2015-2019 Usage by class

2019 Gallons per Capita per Day

Institutional and Industrial uses includes water used for snowmaking. As it is difficult to promote conservation regarding water used to create snow for the ski industry, we believe this use misrepresents our actual customer use and the yearly fluctuation may taint our conservation progress.

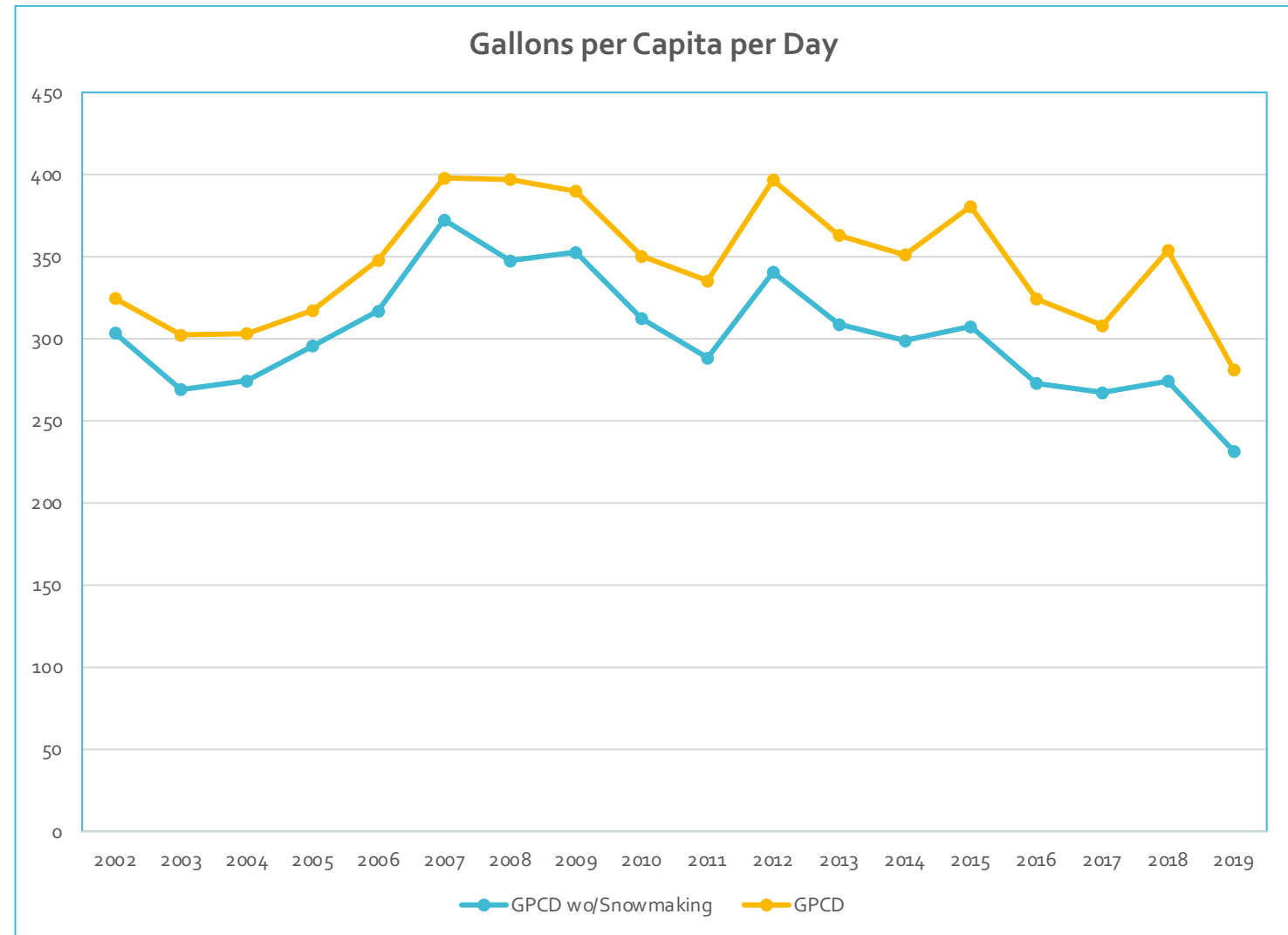
Therefore we have chosen to exclude Snowmaking use from our studies.

	Residential	Commercial	Industrial	Institutional	Total
2015	408,121,047	293,360,190	174,027,312	30,161,555	905,670,104
2016	324,981,399	201,953,711	123,027,688	6,766,122	756,435,647
2017	383,811,568	203,264,884	105,023,975	53,530,804	745,631,231
2018	407,795,307	198,001,524	212,452,548	44,569,900	862,819,279
2019	345,663,092	181,971,765	126,355,773	43,725,541	697,716,171

Gallons per Capita per Day							
	WO/ Snowmaking				W/Snowmaking		
	Indoor (Winter Use)	Potable (Outdoor)	Total		Indoor (Winter Use)	Potable (Outdoor)	Total
Residential	63	76	139		63	76	139
Commercial	63	10	73		63	10	73
Institutional	4	9	13		4	14	18
Industrial	0	1	1		0	51	51
All Users	130	96	226		130	151	281

Progress

We are proud to announce we have made significant progress towards reaching our goal of 200 gallons per capita per day.



Ongoing Conservation Practices

- The following are steps we have and are taking to reduce our use and loss.
- Reduce water loss by 50%. Which will reduce overall water production by 10%. We will accomplish this by replacing faulty meters, locating and repairing underground leaks, and reducing our facilities process water use.
- Utilize meter technology to catch and stop leaks within our customer's homes and irrigation systems quickly.
- Time of day watering restrictions and a recommended twice a week watering schedule.
- Public Awareness Information is provided to our shareholders in several ways.
 - Our Facebook and Twitter pages are regularly updated with the current weekly watering guide as well as indoor and outdoor conservation tips.
 - Our website summitwater.us includes a page dedicated to conservation tips and our irrigation schedule.
 - Personal contact from our staff when a leak within a customer's home or irrigation is detected.
 - Those who come to us to connect a new home to the system are instructed about their water share and the cost of exceeding it. They are encouraged at that time to be mindful about how much grass they plant and to use water wise landscaping in their overall plan.
 - When property is sold, new shareholders receive a packet of information that explains their water share, the charges associated with it, and conservation methods to assist their efforts
 - One-on-one discussions between SWDC staff and shareholders and between shareholders themselves have proved to be an effective catalyst to water conservation.
 - Shareholders are updated monthly on each bill about the status of their water use in the current water year and often tips promoting conservation.
- Deposit. The water company holds a deposit on new construction until the sprinkling system is installed. This encourages contact between the water company and the shareholder at a critical time when we can have some input about conservation and water use.
- Restricted Use. During periods of high temperatures and peak demand, the water company has developed a contingency plan that calls for restricted use of water by shareholders.
- Conferences and other training opportunities. SWDC has a staff member currently certified in Water Conservation and is an active member of the Rural Water Association of Utah. We have participated in every annual conference and many of the summer conferences. We attend many of their training classes. We also attend many Division of Drinking Water training sessions. All of these assist us in being well prepared to assist our shareholders.

SWDC would like to
thank our customers for
their continuing efforts to
conserve water.

**SUMMIT WATER DISTRIBUTION COMPANY**

8506 Bluebird Lane Park City, UT 84098

435-649-7324

Email summitwater@swdc.uswww.summitwater.us**10/31/2020**SIT1102A 1 1 AV 0.389
7000000001 00.0001.0001 1/1PARK CITY FIRE DISTRICT
C/O ACCOUNTING DEPT.
PO BOX 980010
PARK CITY UT 84098-0116**Account Number:**

1404

Service Address:

2575 W Kilby Road

SWDC will hold a shareholder review meeting for our updated Conservation Plan on November 18, 2020 at 2:00 p.m. via Zoom. Please visit our website at www.summitwater.us for the Zoom link.

Visit www.summitwater.us/billing to pay online and view or update account information.

Water Share Assessment through:

10/30/2020

Current Monthly Assessment

\$151.50

Pump Surcharge

\$6.21

Total Payment Due**\$157.71****Water Used**
For 1,207**Annual Gallons Available for Use****488,777****Water Share Used****Annual Gallons Used****239,451****48.9899 %****NAME:** Park City Fire District**BILLING DATE:** 10/31/2020**ACCOUNT NUMBER:** 1404**DUE DATE:** 11/25/2020**AMOUNT DUE:** \$157.71**Amount Paid:** _____

Please return this portion of your bill with your check to :

SUMMIT WATER DISTRIBUTION COMPANY
8506 BLUEBIRD LN
PARK CITY, UT 84098-5467

0010000000014040000000014040000015771



Change of Mailing Address or Phone?

Check here and provide information below.



Summit Water
Distribution
Company
@summitwdc

Home

Posts

Videos

Photos

About

Community

Create a Page



Like Share ...

Call Now

Send Message

Posts



Summit Water Distribution Company

42 mins · 🌐

SWDC will hold a shareholder review meeting on conservation November 18th at 2:00pm via Zoom. The Zoom details are on the SWDC website. <https://www.summitwater.us/conservation-plan-review-meeting/>



SUMMITWATER.US

Conservation Plan Review Meeting – Summit Water Distribution Company

Conservation Plan Review Meeting Posted on November 18, 2020 November 18, 2020 by Laramie Simmons SWDC will hold a...

Like

Comment

Share



Summit Water Distribution Company

November 3 at 9:30 AM · 🌐

4:20 pm Update: SWDC will continue working on the leak repair located on Sackett Drive tomorrow, November 5th. Water service will be shut off from 9:00 am to 5:00 pm.

11/4/2020 Update: SWDC is still working on the water leak located on Sackett Drive. Water service will be shut down for approximately 3 hours beginning at 11:00 am.

Summit Water crews will be working on a leak repair on Sackett Drive today, November 3rd between the hours of 10am and 5pm.... See More

Summit Water Distribution Company
Water Utility Company in Park City, Utah

Open Now

Community

See All

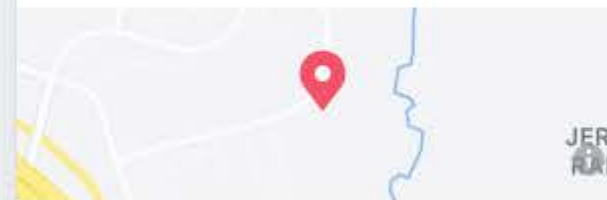
49 people like this

58 people follow this

1 check-in

About

See All



8506 Bluebird Ln (274.82 mi)
Park City, UT 84098

Get Directions

(435) 649-7324

Contact Summit Water Distribution
Company on Messenger

www.summitwater.us

Water Utility Company

Hours 8:00 AM - 4:30 PM

Open Now

See more of Summit Water Distribution Company on Facebook

Log In

or

Create New Account



(435) 645-7024

Pay Your Bill Online!



- HOME
- ABOUT
- EDUCATION
- CONSTRUCTION
- CONSERVATION
- FAQ
- NEWS
- BILLING
- CONTACT US



CONSERVATION PLAN REVIEW MEETING

SWDC will hold a shareholder review meeting of our updated Conservation Plan on November 18, 2020 at 2:00 p.m. via Zoom. Please click [here](#) for the link. The meeting ID is 947 8786 4211 and the pass code is 382469.

IRRIGATION GUIDE

It's time to turn off and blow out your sprinklers! The current irrigation recommendation from the Division of Water Resources for Summit County is ZERO irrigations per week. For more information, [click here](#).

THANK YOU!